

## Technical information:

**The artwork** will be realized at Kaisaniemenkatu 9 in Helsinki. The artist can work between 10 am and 5 pm on weekdays and 10 am-2 pm on Saturdays, unless otherwise agreed.

The site for the art work will be a long corridor wall, a 18m x 2,90m white stone wall, shaped in a half circle (Nr 1 on the attached ground plan). Optionally, the artist can also use display windows facing the street, from the left: 1,15m x 2,60m at an angle with 3,30m x 2,60m, and the following window 2,50m x 2,60m, at an angle with a window in 4 panels, each 1,20m x 1,70m, and above these two panels, each 2,30m x 60 m (Nr 2 on the attached ground plan). The corridor work will be on display from August 15<sup>th</sup> until at least until January 20, but a possible work in the window will be on display no longer than to the end of October '19.

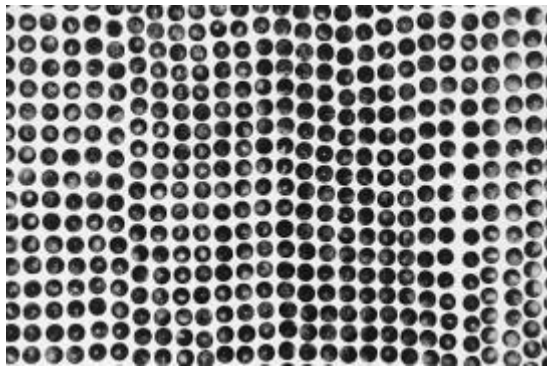
**Specifications and limitations:** The corridor wall is in a walkthrough space, for fire security reasons the floor must be free and flammables may not be used. There is at present no suspension system. The current art work is painted straight onto the wall.

**The period of work:** is planned between August 6th and 15th, we have projected a week for the realization of the work, but this can be discussed.

In the picture below, the whole street view is seen. The windows we envisage using are one or two large windows the furthest to the left.



The corridor, painted by Shabnam Faraeed, 2017 and Jens Gregersen 2018



A section of the work Interference by Lars Waldemar, 2018.

The displays windows, painted by safe house artist Shieko Reto, January 2017



**The apartment** is situated in the office building of the Nordic Culture Point, B28 in Suomenlinna, and consists of a bedroom, living room, kitchen and bathroom, as well as a loft above the living room. The boat trip to Helsinki takes around 10 minutes, and the Culture centre where the work will be realized is at walking distance from the ferry.

